



Banwick Centre

2842 Banwick Road, Columbus, Ohio 43232

Property Features

- 7,490 SF with 1,440 SF of office space
- Available for Lease 1/22/2022
- 12 x 14 Drive-In Door and 1 Dock
- 3-Phase 120/208 V
- Professionally finished office area, includes 2 restrooms & kitchenette
- Parking available in front and rear
- Zoned M
- Located off James Road at State Route 33 & 104

Lease Rate: \$4,500.00 Per Month (Gross)



For more information:

Dan Sheeran, Jr.

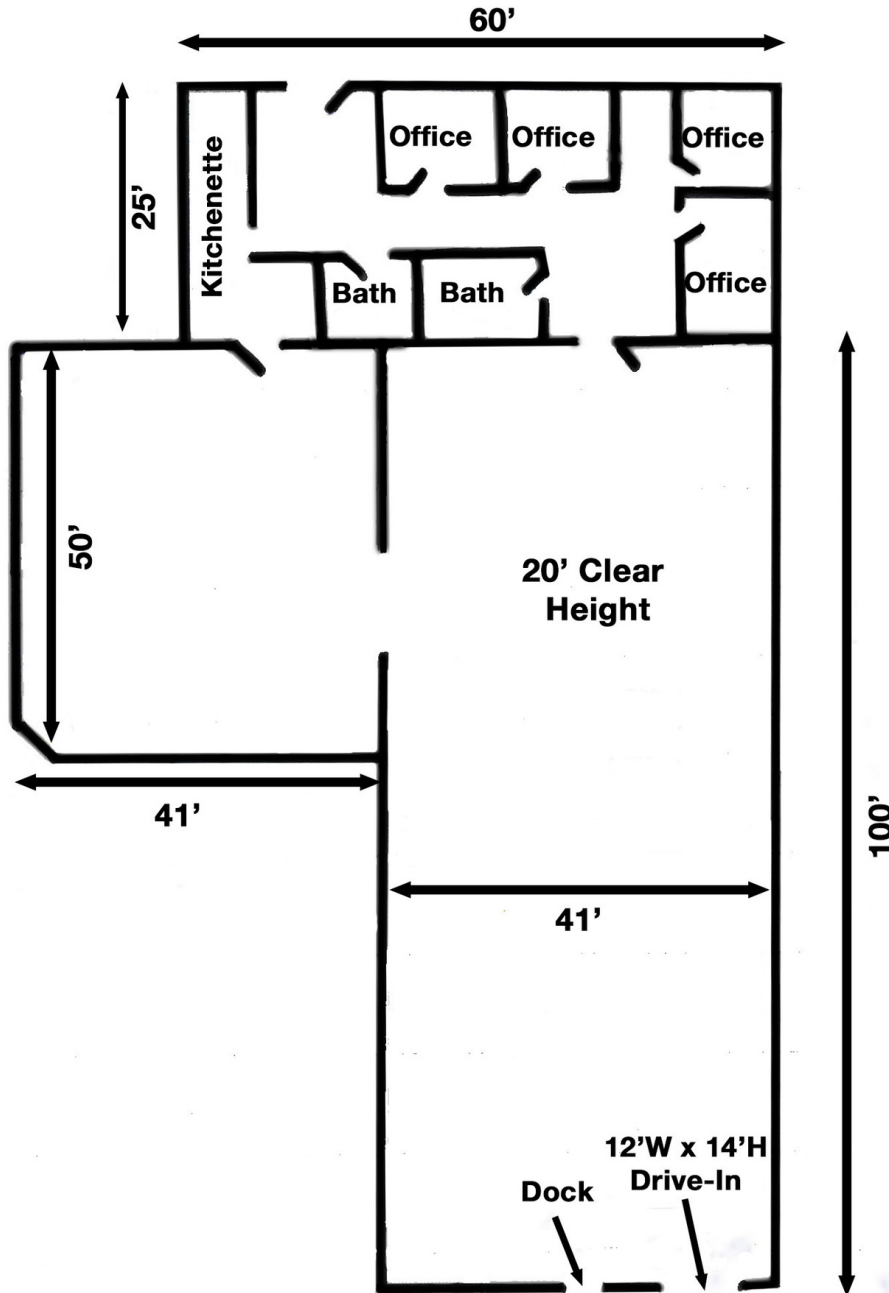
614 629 5228 • djsheeran@ohioequities.com

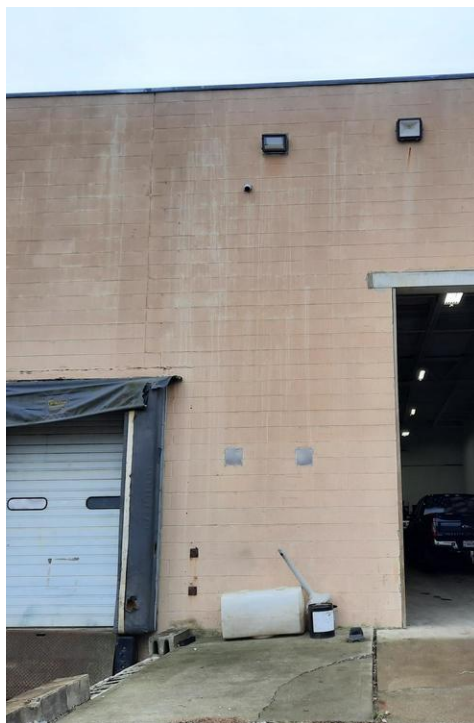
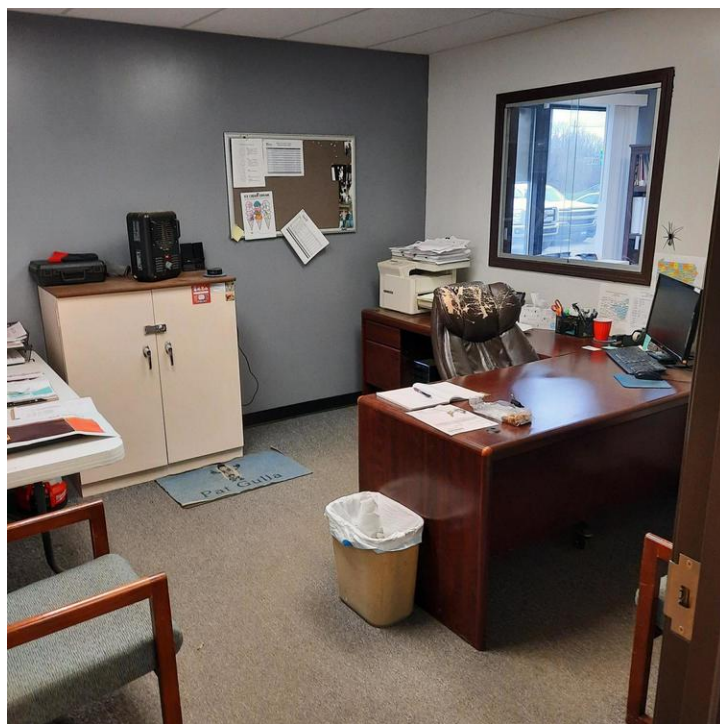
Mike Semon

614 629 5217 • mjsemon@ohioequities.com

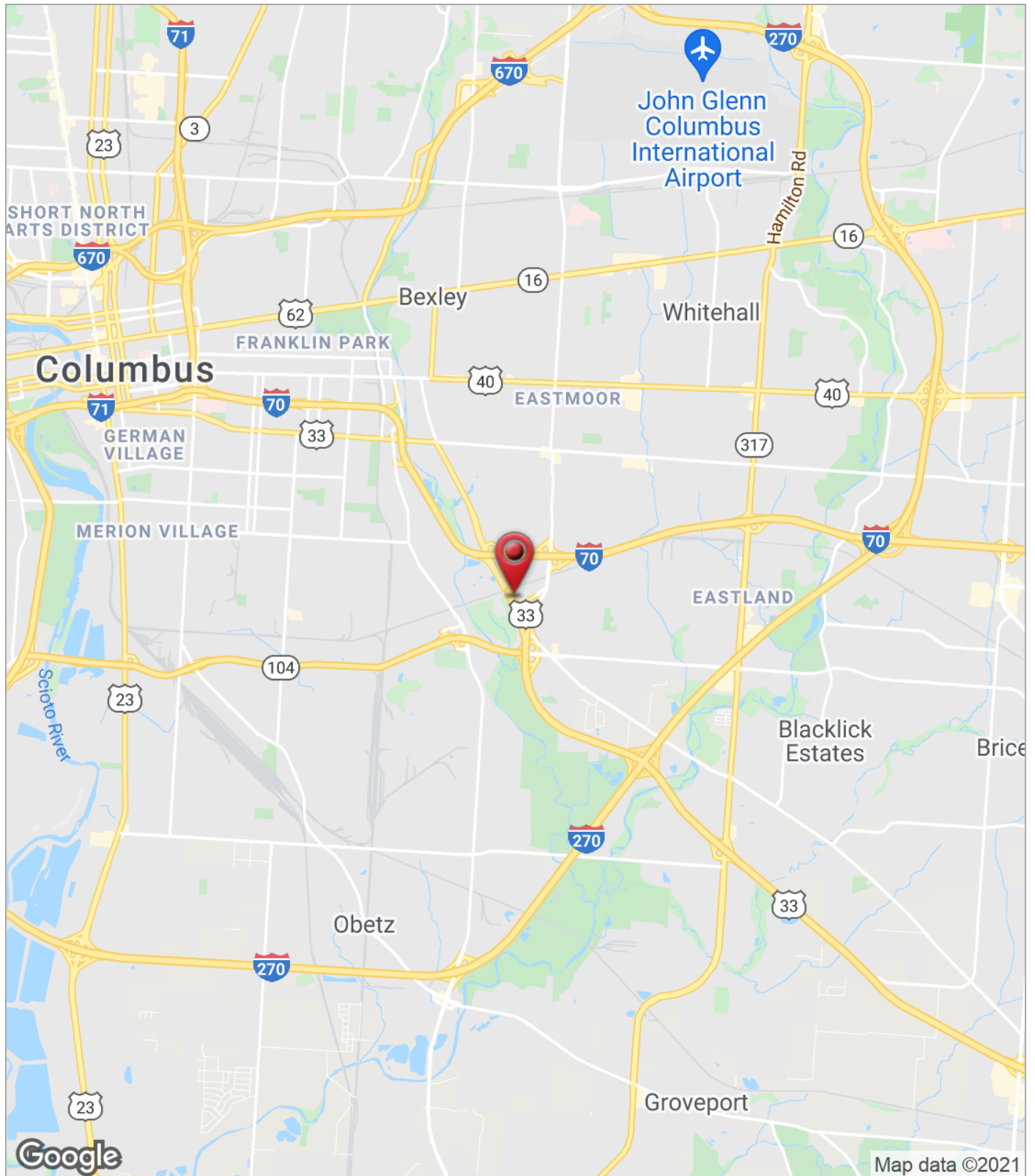
Dan Sheeran

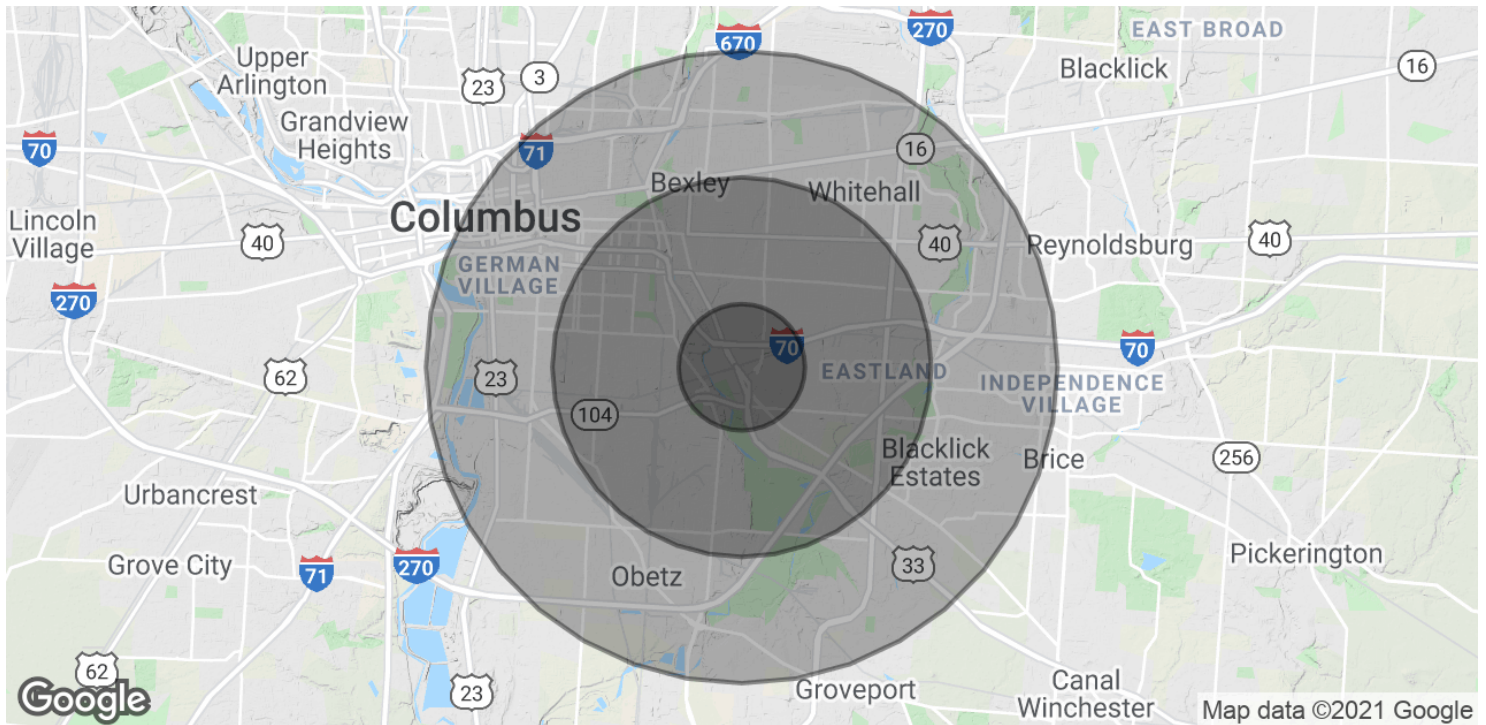
614 629 5216 • dsheeran@ohioequities.com





7,490 SF Warehouse with Office for Lease





POPULATION

	1 MILE	3 MILES	5 MILES
Total Population	10,075	86,735	237,102
Average Age	34.5	35.6	35.1
Average Age (Male)	33.5	33.4	33.7
Average Age (Female)	35.7	37.7	36.5

HOUSEHOLDS & INCOME

	1 MILE	3 MILES	5 MILES
Total Households	4,571	34,900	96,058
# of Persons per HH	2.2	2.5	2.5
Average HH Income	\$43,488	\$50,519	\$49,495
Average House Value	\$142,583	\$135,466	\$133,745

* Demographic data derived from 2010 US Census